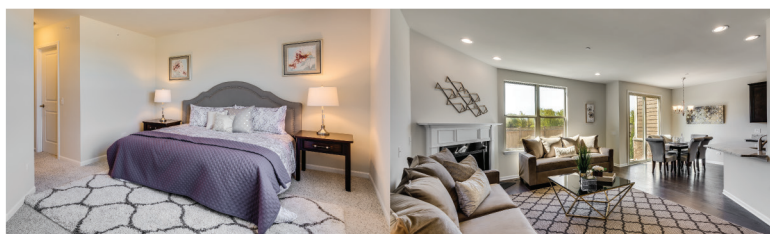


OWN FOR LESS
THAN RENTING



OWN A NEW TOWNHOME FOR \$1,602 PER MONTH!

At Autumn Creek Townes, you'll love living in an established, picturesque community with trails, ponds and open space. Our unique townhome designs offer over 1,500 square feet of living space with 2-3 bedrooms, 2.5 baths and a luxurious oversized Master Suite.



- New, two-story townhomes from \$164,990
- 92 Acres of open space, ponds and walking trails in the community
- On-site Green's Filling Station park/playground
- On-site Autumn Creek Elementary school
- 3 miles to shopping at Kendall Marketplace including Target, Starbucks, The Home Depot, Marshalls and Kohl's
- Less than 10 minutes from Raging Waves Waterpark
- 15 minutes to Interstate 88
- 2 miles to IL-47
- Less than 10 minutes to Bicentennial Riverfront Park, home to the Marge Cline Whitewater Course
- 15 minutes to Silver Springs State Park with 1,350 acres for fishing, boating, hiking, hunting, camping and picnicking
- Less than 30 minutes to Chicago Premium Outlets in Aurora

Contact us today to secure your homesite. We're selling out of our Settler's Ridge community, located at 1323 Cornell Circle, Sugar Grove, IL 60554.

(800) 540-7714 | Pulte.com/AutumnCreek

*Example based on participation in the Affiliate Incentive Program, including financing through Pulte Mortgage LLC (NMLS 1791), and application of incentives toward closing costs, including any discount points, based on a conventional 30 year fixed rate mortgage, sales price \$189,125, loan amount \$183,451 and 3% down payment, interest rate of 3.875%/4.375% APR, effective 11/05/19. Payment does not include HOA fees. Loans subject to lender approval. Rates, terms, and conditions subject to change without notice. Pulte Mortgage is an Equal Opportunity Lender. Licensing information: secure.pultemortgage.com/information/contactus.aspx or www.nmlsconsumeraccess.org. IL – Illinois Residential Mortgage Licensee, 1900 East Golf Road, Suite 300, Schaumburg, IL 60173, (NMLS #1791 nmlsconsumeraccess.org)

