

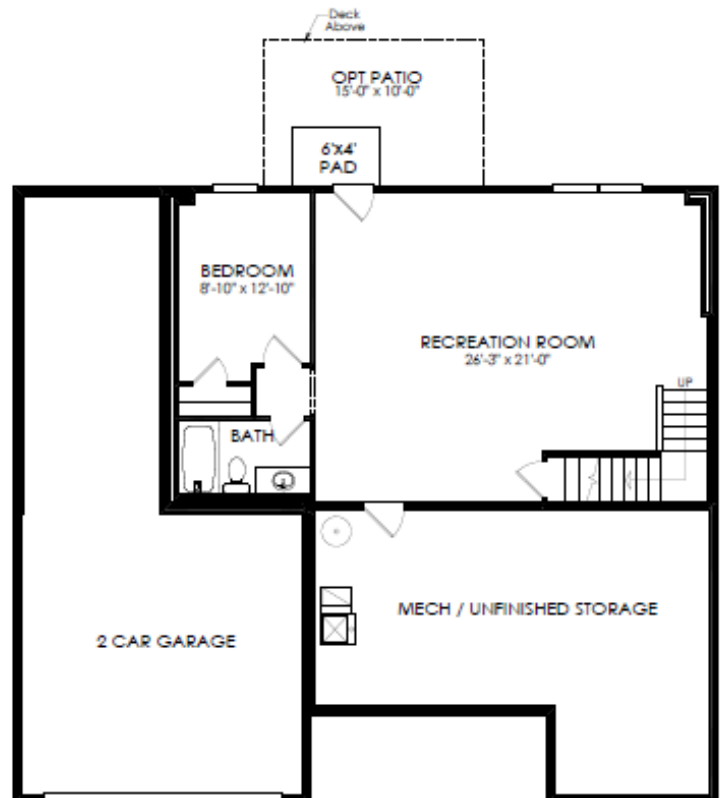
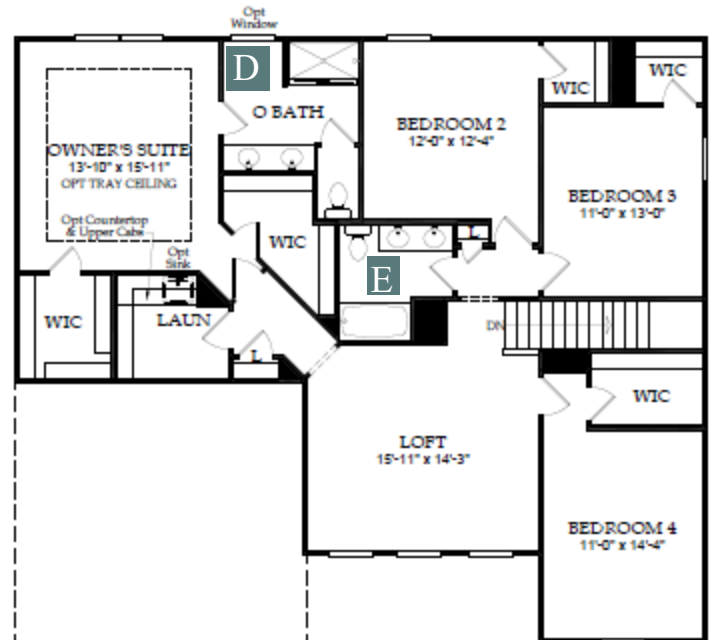
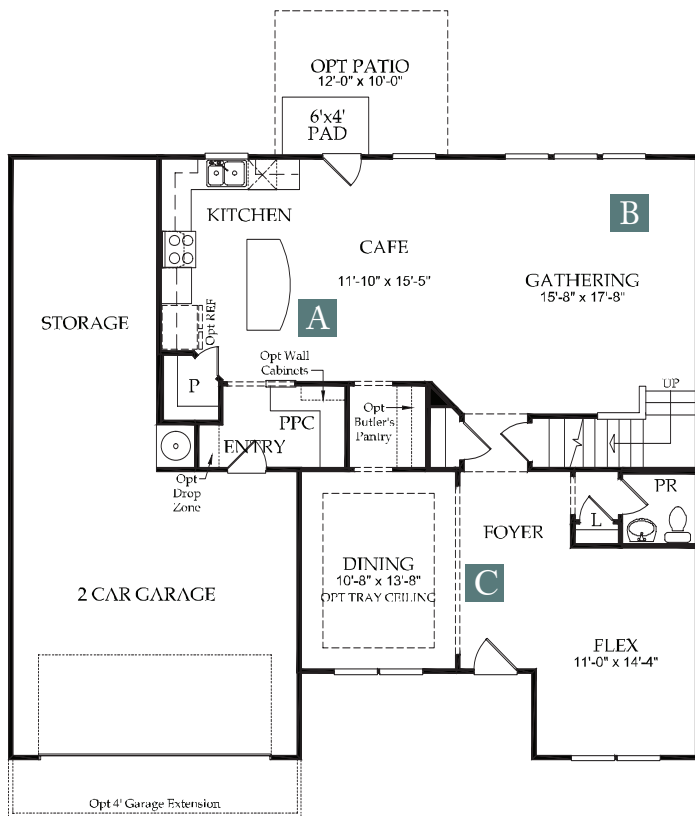
# The Wingate Basement



5+ Bedrooms | 3.5+ Bathrooms | 3,673 square feet



# Wingate Floorplan



## Additional Structural Options

- A** Gourmet Kitchen
- B** Sunroom and Covered Lanai Options, Side or Corner  
Fireplace (with or w/o 4' extension)
- C** Guest Suite or Opt Library ilo Flex
- D** Owner's Bathroom Options
- E** Bathroom Options

For additional structural options, visit [www.pulte.com/brixworth](http://www.pulte.com/brixworth)



Floor plans and elevations are artist's conception and are not intended to show specific detailing. Floor plans, windows, and room sizes vary per elevation. Pulte reserves the right to make changes without notice or prior obligations. Square footage and dimensions are estimated and may vary in actual construction. ©2018 Pulte Home Company, LLC. All rights reserved.